

TRACKED MOBILE IMPACT CRUSHER



I-110
f YouTube e

WORKS FOR YOU.™

I-110

The Terex Finlay I-110 tracked impact crusher has been specifically designed for quarrying, mining, recycling and demolition applications. The Terex Finlay I-110 features a Ø1000mm x 1000mm (Ø40" x 40") hydrostatic drive impact chamber with variable rotor speed. The advanced electronic control system monitors and controls the speed of the rotor and regulates the VGF with integrated pre-screen to maintain a consistent feed of material into the impact chamber while maintaining optimal crushing capacity. The machine provides operators high material reduction ratios and produces a consistent product shape.

Features:

- ▶ Fully hydraulic assisted apron setting features makes adjustment of the aprons convenient and efficient.
- ▶ Heavy duty vibrating feeder (VGF) with integral pre-screen removes dirt fines and sizes bypass material for reprocessing.
- ▶ Under crusher vibratory plate feeder with wear resistant liners aids material discharge flow and reduces under crusher blockages.
- ▶ Crusher chamber is supplied with a 4 bar rotor as standard with a 3 bar rotor available as an option.

STANDARD FEATURES

Engine:

Tier 3 / Stage IIIA - Caterpillar C9 Tier III ACERT 224kW (300hp)

Stage IIIA Constant Speed: Scania DC09 273kW (365hp)

Tier 4 Final / Stage IV: Scania DC09 257kW (350hp)

Chamber:

4 bar rotor - Martensitic blow bars 2 High & 2 Low - 1000mm x 1000mm (40" x 40")

Hydrostatic drive and advanced electronic control system

HOPPER/FEEDER:

Hopper capacity: 5m³ (6.5yd³)

Heavy duty vibrating feeder (VGF) with integral prescreen

Grizzly bar spacing 40mm standard

Selectable discharge to by-pass conveyor or main conveyor

Mesh aperture on grizzly feeder: 40mm

Main Conveyor:

Belt: 900mm (36") Wide

High spec scraper at main conveyor head drum

Piped for Dust suppression complete with spray bars

General:

Galvanised catwalk c/w handrail, kickboard and access ladders

Hand Held Track Control Set with Connection Lead

Single speed tracking

Heavy duty track unit - 3.28m (10' 9") sprocket centres, 400mm (16") shoe width

Safety Guards in Compliance with Machinery Directive

Emergency stops

Impact chamber

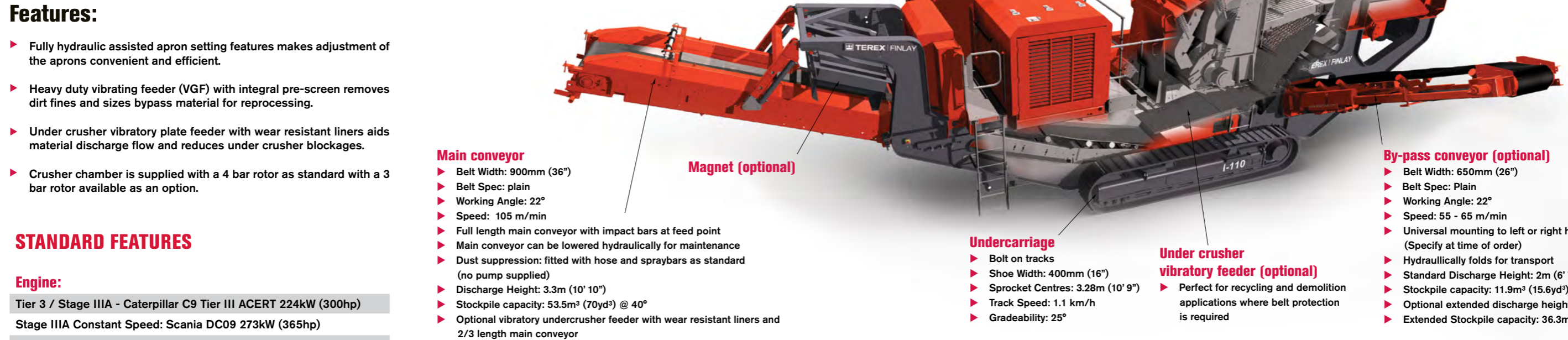
- ▶ Rotor diameter: Ø1000mm (40")
- ▶ Rotor width: 1000mm (40")
- ▶ Inlet opening: 900mm x 830mm (35" x 32")
- ▶ Rotor speed Range: 520 – 800 rpm
- ▶ Maximum feed size 500mm (20") depends on material
- ▶ Drive arrangement: Hydrostatic Drive
- ▶ Twin Apron
- ▶ Maximum apron settings: Primary: 200mm (8") Secondary: 100mm (4")
- ▶ Minimum apron settings: Primary: 50mm (2") Secondary: 20mm (3/4")
- ▶ Rotor Configuration: 4 bar rotor, 2 high / 2 low standard
- ▶ Rotor speed Range: 520 – 800 rpm
- ▶ Hydraulically opens for access
- ▶ Simple wrench adjustment of breaker plates, hydraulic assist
- ▶ Blowbar options: Martensitic (standard), ceramic & high chrome

Powerpack

- ▶ Tier 3 / Stage IIIA: Caterpillar C9 Tier III ACERT
Engine Power: 224kW (300hp)
Engine Speed: 2000 rpm
- ▶ Stage IIIA Constant Speed: Scania DC09
Engine Power: 273kW (365hp)
Engine Speed: 1800 rpm
- ▶ Tier 4F / Stage IV: Scania DC09
Engine Power: 257kW (350hp)
Engine Speed: 2000 rpm

Hopper / Feeder

- ▶ Hopper capacity: 5m³ (6.5yd³)
- ▶ Feed height: 3.39m (11' 2")
- ▶ Material: 10mm (3/8") wear resistant steel
- ▶ Width at rear: 1.73m (5' 8")
- ▶ Vibrating Grizzly feeder (VGF): 1.39m x 940mm (4' 7" x 3' 1")
- ▶ VGF grizzly aperture: 40mm standard (75mm, 100mm optional)
- ▶ VGF wire mesh aperture: 38mm
- ▶ Speed range: variable 450 - 800 rpm
- ▶ Optional Hopper extensions - 8m³ (10.4yd³)
- ▶ Locking mechanism: manual
- ▶ Extensions Hydraulically folding sides and rear



Main conveyor

- ▶ Belt Width: 900mm (36")
- ▶ Belt Spec: plain
- ▶ Working Angle: 22°
- ▶ Speed: 105 m/min
- ▶ Full length main conveyor with impact bars at feed point
- ▶ Main conveyor can be lowered hydraulically for maintenance
- ▶ Dust suppression: fitted with hose and spraybars as standard (no pump supplied)
- ▶ Discharge Height: 3.3m (10' 10")
- ▶ Stockpile capacity: 53.5m³ (70yd³) @ 40°
- ▶ Optional vibratory undercrusher feeder with wear resistant liners and 2/3 length main conveyor

Magnet (optional)

Undercarriage

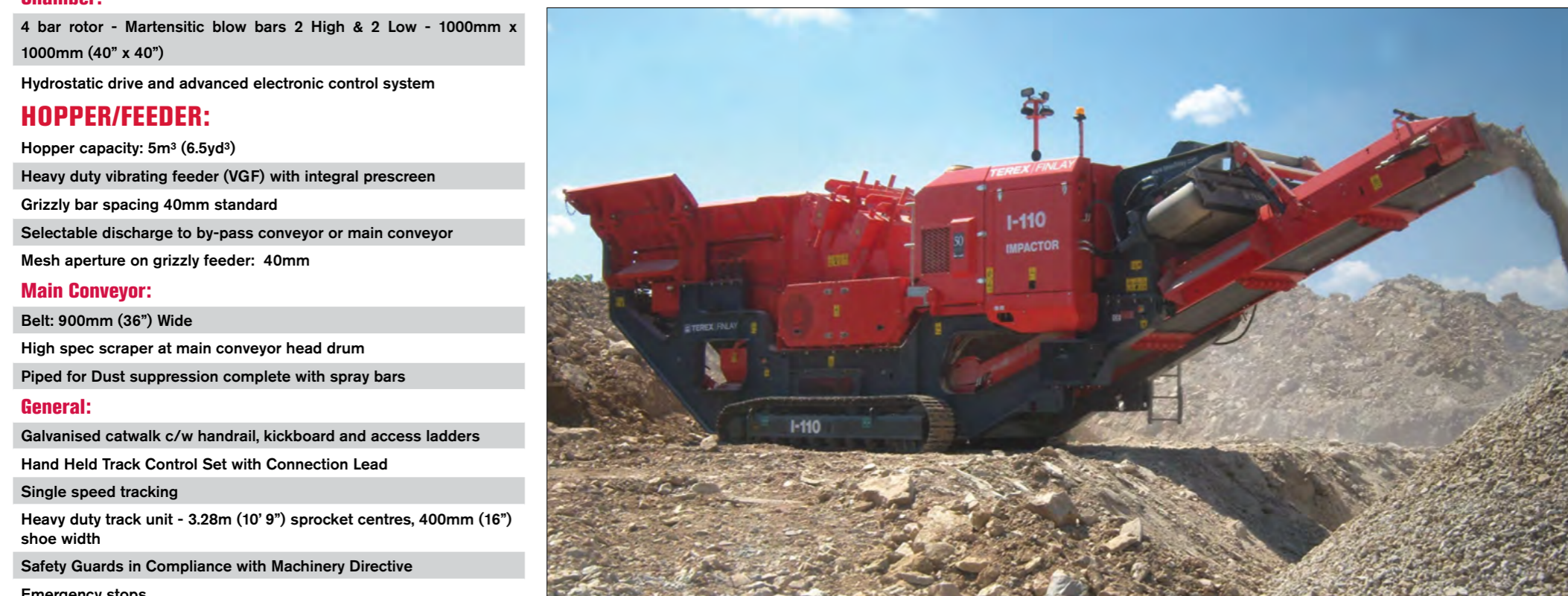
- ▶ Bolt on tracks
- ▶ Shoe Width: 400mm (16")
- ▶ Sprocket Centres: 3.28m (10' 9")
- ▶ Track Speed: 1.1 km/h
- ▶ Gradeability: 25°

Under crusher vibratory feeder (optional)

- ▶ Perfect for recycling and demolition applications where belt protection is required

By-pass conveyor (optional)

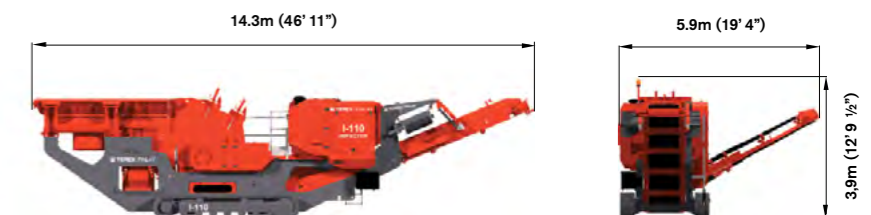
- ▶ Belt Width: 650mm (26")
- ▶ Belt Spec: Plain
- ▶ Working Angle: 22°
- ▶ Speed: 55 - 65 m/min
- ▶ Universal mounting to left or right hand side (Specify at time of order)
- ▶ Hydraulically folds for transport
- ▶ Standard Discharge Height: 2m (6' 7")
- ▶ Stockpile capacity: 11.9m³ (15.6yd³) @ 40°
- ▶ Optional extended discharge height: 2.9m (9' 6")
- ▶ Extended Stockpile capacity: 36.3m³ (47.5yd³) @ 40°



Transport Dimensions



Working Dimensions



Machine Weight: * 34,000Kg (74,957lbs)
* Standard Machine configuration

Follow us on:



www.terexfinlay.com

Effective January 2015. Product specifications and prices are subject to change without notice or obligation. The photographs and/or drawings in this document are for illustrative purposes only. Refer to the appropriate Operator's Manual for instructions on the proper use of this equipment. Failure to follow the appropriate Operator's Manual when using our equipment or to otherwise act irresponsibly may result in serious injury or death. The only warranty applicable to our equipment is the standard written warranty applicable to the particular product and sale and Terex GB Ltd. makes no other warranty, express or implied. Products and services listed may be trademarks, service marks or trade-names of Terex Corporation and/or its subsidiaries in the USA and other countries. All rights are reserved. Terex® is a registered trademark of Terex Corporation in the USA and many other countries. Copyright 2010 Terex GB Ltd.



TEREX® | FINLAY

WORKS FOR YOU.™