

# 893

The Terex® Finlay 893 is a highly versatile and aggressive machine engineered and built for working in large scale quarrying, mining, construction and demolition debris, topsoil, recycling, sand, gravel, coal, ore and aggregate applications. The plant has the capacity to process at a rate of up to 800 tonnes per hour and can be fed either by a tracked mobile crusher, shovel or an excavator.

Depending on the application the working angle of the aggressive screenbox can be hydraulically adjusted to between 14 – 18°. A key feature of the machine is the capability to change the working angle of the hopper/feeder. The working position can be lowered so that it can work with ease with a mobile crusher. The hopper/feeder working position can be raised to provide a reduced feeder angle when operated in direct mode from an excavator or shovel.

The screenbox top deck can be fitted with a variety of screening media including; Mesh, Punch plate, bofar bars & Tines. The bottom deck can be fitted with mesh, punch plate & cascade fingers.

This fully self-contained plant can be hydraulically folded and ready for transport in less than 30 minutes making it the ideal machine for large scale contract screening projects where a highly productive and dependable screen is paramount.

## STANDARD FEATURES

Tier 3 - Caterpillar C6.6 - 6 cylinder diesel engine developing 151kW (202hp) @ 2200 rpm - (C7.1 LRC replacement for the C6.6 will commence approx. March 2015)

Tier 4i / Stage IIIB - Caterpillar C4.4 - 4 cylinder diesel engine developing 129kW (173hp) @ 2200 rpm - Only available up to QTR 2 - contact sales

Tier 4F / Stage IV - Caterpillar C4.4 - 4 cylinder diesel engine developing 129kW (173hp) @ 2200 rpm

Abbrasion Resistant plate steel Abbrasion Resistant plate steel pan apron feeder with heavy duty chain drive

Hopper capacity: 10m<sup>3</sup> (13.08 yd<sup>3</sup>)

Remote start stop of apron feeder

Adjustable feed height - 470mm range

Modular configuration screen box

Hydraulic raise for mesh changing (660mm)

6.1m x 1.83m (20' x 6') top deck screen and 5.5m x 1.83m (18' x 6') bottom deck screen

Top deck side and Bottom deck end tensioned mesh fitting parts as standadard

Galvanised Catwalk around screen c/w handrail, kick board and access ladder

Screen box reject chute c/w wear resistant liners

Belt Width: 1.6m (63") wide O/S conveyor with twin drive and chevron belt (4.55m discharge height)

Skirting on oversize conveyor

Impact bars in feedboot and impact slips thereafter

Belt Width: 900mm(36") wide chevron belt on middle grade conveyor with variable speed, thumper roller & telescopic head section

Belt Width: 900mm (36") wide plain belt on fines conveyor with variable speed, belt scraper & telescopic head section

Belt Width: 1.4m (55") wide plain belt with variable speed control & high spec scraper

Heavy duty undercarriage unit with 500mm wide pads - 3.8m sprocket centres

Control operation of tracks via hand held-set with 5m connection lead

Safety guards in compliance with machinery directive

Low level greasing

Emergency Stops (4 nr)



### Hopper / Feeder

- ▶ Hopper Capacity: 10m<sup>3</sup> (13.08 yd<sup>3</sup>)
- ▶ Feed height: 3.22m - 4.134m (10' 6" - 13' 6")
- ▶ Feed in width: 1.698m - 2.475m (5' 6" - 8' 1")
- ▶ Tensioning bottom deck: end
- ▶ Drive: Hydraulic variable speed drive via high torque gearbox and heavy duty chain drive
- ▶ Apron feeder dimensions: 1.1m x Length 5.18m (43" x 16' 12")
- ▶ Speed: variable, up to 24 mpm
- ▶ Abrasion Resistant steel pan apron feeder mounted with wide mouth opening
- ▶ Hopper extensions (Optional): Feed height: 4.905m - 5.29m (16' 1" - 17' 3") , Feed in width: 3.724m (12' 2")

### Fines Conveyor

- ▶ Belt width: 900mm (36")
- ▶ Belt spec: plain
- ▶ Working Angle: 25°
- ▶ Rosta scraper on head drum
- ▶ Speed: variable speed, up to 122 mpm
- ▶ Standard Discharge Height: 4.5m (14' 09")
- ▶ Stockpile capacity: 136m<sup>3</sup> (178yd<sup>3</sup>) @ 40°

## Features:

- ▶ Versatile aggressive screen box can be easily adapted to suit many applications.
- ▶ Modular configuration screen box with 6.1m x 1.83m (20' x 6') top deck and 5.5m x 1.83m (18' x 6') bottom deck screen.
- ▶ Screen box angle can be hydraulically adjusted to an angle between 14 – 18°.
- ▶ Screen box discharge end can be hydraulically raised 600mm (24") to facilitate efficient and easy media access and changing.
- ▶ All stockpiling conveyors are hydraulic angle adjustable with hydraulic extending head sections for maximum discharge & stockpile height.
- ▶ Apron feeder angle adjustable, lower position to accommodate crusher feed, high position provides reduced feeder incline angle when operated in direct feed mode from excavator/loader.

### Screenbox

- ▶ Top deck: 6.1m x 1.83m (20' x 6')
- ▶ Upper deck media: 40mm – 200mm
- ▶ Bottom deck: 5.5m x 1.83m (18' x 6')
- ▶ Bottom deck media: 100mm max
- ▶ Tensioning top deck: side
- ▶ Tensioning bottom deck: end
- ▶ Drive: hydraulic with heavy duty bearing single shaft, 2 bearing
- ▶ Catwalks: Galvanised access catwalk on both sides of screen
- ▶ Screen Angle: 14° - 18°
- ▶ Screen Speed: 800 rpm - 1000 rpm
- ▶ Screen stroke Min/Max range: 8mm-10mm
- ▶ Screen stroke standard: 8mm
- ▶ Wear resistant liners on top deck discharge chute
- ▶ Screen box discharge end raises hydraulically 500mm to facilitate mesh changing
- ▶ Media options: Mesh, Punch Plate, Tines, Bofar bars, Cascade Fingers
- ▶ Total screening area: 21.2m<sup>2</sup> (228 ft<sup>2</sup>)

### Midgrade Conveyor

- ▶ Belt width: 900mm (36")
- ▶ Belt spec: Chevron
- ▶ Working Angle: 25°
- ▶ Speed: variable speed, up to 114 mpm
- ▶ Standard Discharge Height: 4.35m (14' 03")
- ▶ Stockpile capacity: 122m<sup>3</sup> (159.6yd<sup>3</sup>) @ 40°

### Oversize Conveyor

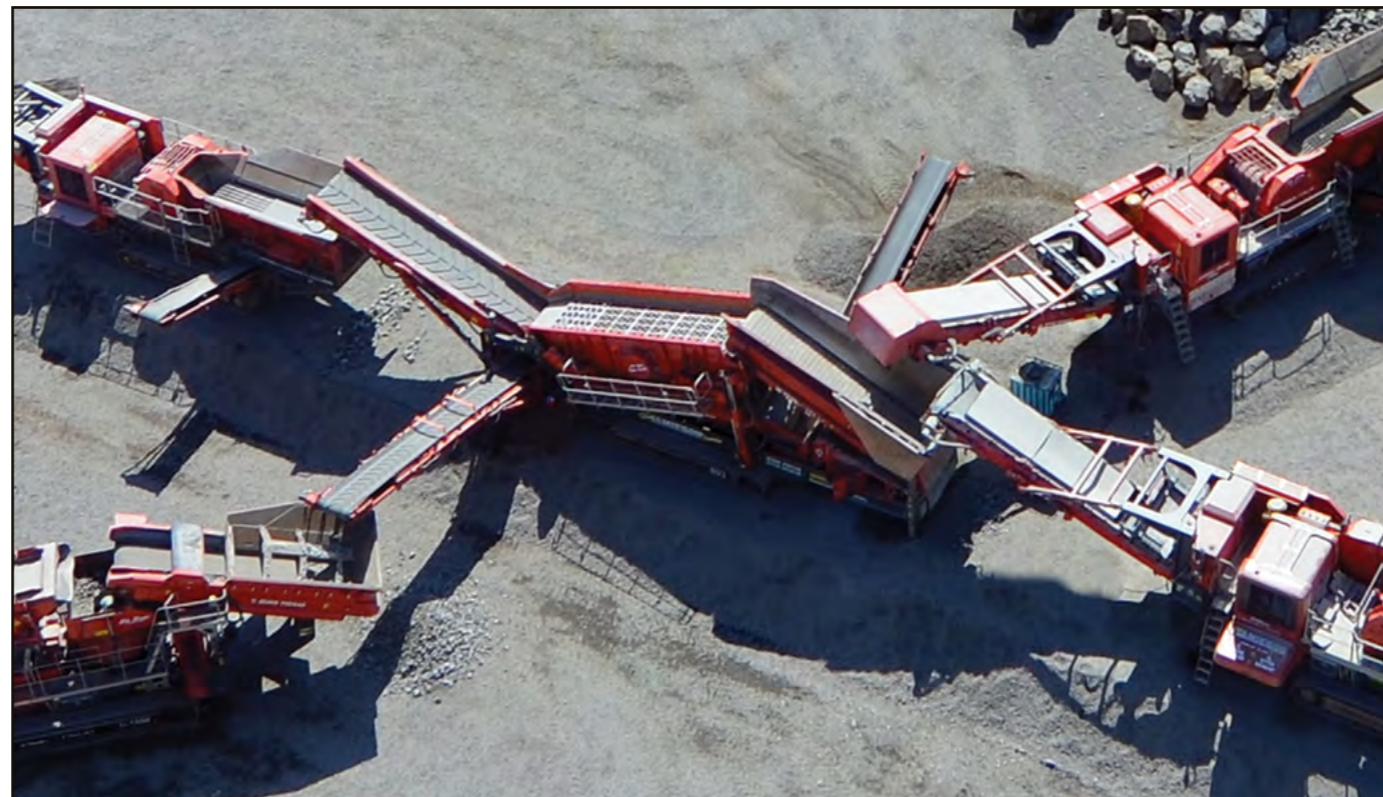
- ▶ Belt width: 1.6m (63")
- ▶ Belt spec: Chevron
- ▶ Working Angle: Hydraulic raise/lower variable working angle - 14° to 24°
- ▶ Speed: 52 mpm
- ▶ Hydraulically folding head section
- ▶ Impact bars full length of conveyor
- ▶ Steel skirted full length of conveyor
- ▶ Discharge Height: 4.55m (14' 11")
- ▶ Stockpile capacity: 140.1m<sup>3</sup> (183.2yd<sup>3</sup>) @ 40°

### Powerpack

- ▶ Tier 3 / Stage IIIA: Caterpillar C6.6 Engine Power: 151kW (202hp) Engine Speed: 2200 rpm
- ▶ Tier 4i / Stage IIIB: Caterpillar C4.4 Engine Power: 129kW (173hp) Engine Speed: 2200 rpm
- ▶ Tier 4F / Stage IV: Caterpillar C4.4 Engine Power: 129kW (173hp) Engine Speed: 2200 rpm

### Undercarriage

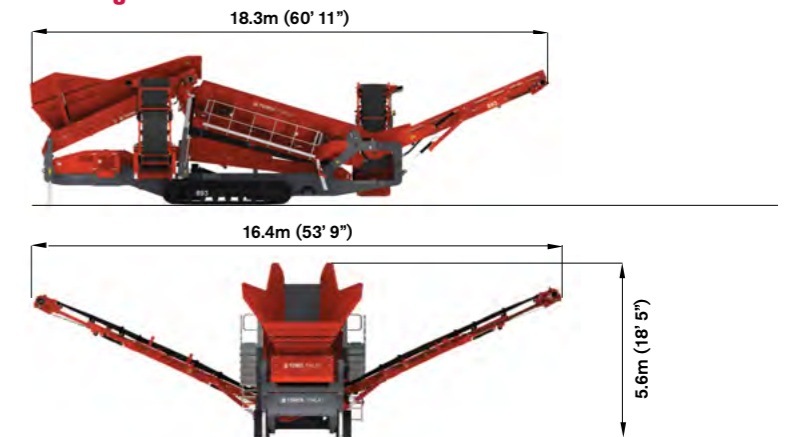
- ▶ Width: 500mm (20")
- ▶ Sprocket centres: 3.8m (12' 6")
- ▶ Gradeability: 28.9°
- ▶ Raking Angle: 10°



### Transport Dimensions



### Working Dimensions



Machine Weight: 48,000kg (106,000 lbs)\*  
\*Standard Machine configuration

**WORKS FOR YOU.™**