



# 873 COMBI FLIP-FLOW SCREEN



Follow us on:



[www.terexfinlay.com](http://www.terexfinlay.com)

Effective January 2015. Product specifications and prices are subject to change without notice or obligation. The photographs and/or drawings in this document are for illustrative purposes only. Refer to the appropriate Operator's Manual for instructions on the proper use of this equipment. Failure to follow the appropriate Operator's Manual when using our equipment or to otherwise act irresponsibly may result in serious injury or death. The only warranty applicable to our equipment is the standard written warranty applicable to the particular product and sale and Terex GB Ltd. makes no other warranty, express or implied. Products and services listed may be trademarks, service marks or trade-names of Terex Corporation and/or its subsidiaries in the USA and other countries. All rights are reserved. Terex® is a registered trademark of Terex Corporation in the USA and many other countries. Copyright 2010 Terex GB Ltd.



MSW

C+D / C+I

Incineration slag

Shredder light fraction

Shredder heavy fraction

Metal recycling

PROGRESS THROUGH DIVERSITY

## 873 Spaleck

The NEW Terex Finlay 873 Spaleck is ideally suited to working in aggregates, sand and gravel, top soil, construction demolition and recycling applications. This highly versatile machine can be fed either by a tracked mobile crusher, shovel or an excavator.

### Features:

- ▶ Nearly blockage-free screening in the upper and lower deck thanks to tried and tested 3D and Flip-Flow technology.
- ▶ The 3D screening segments guarantee accurate screening with no long pieces passing into the middlegrade material.
- ▶ The Flip-Flow screen with screwless mounted screen mats avoids unnecessary cleaning and reduces maintenance times.
- ▶ Galvanised access catwalk on both side of screen.
- ▶ Oversize conveyor angle can be adjusted from 18° to 24°.
- ▶ 1.2m wide Belt feeder complete with 7m<sup>3</sup> manual folding hopper.

### STANDARD FEATURES

Tier 3 / Stage IIIA Caterpillar C4.4 - 4 cylinder diesel engine developing 83kW (111.3hp)

Tier 3 / Stage IIIA Caterpillar C4.4 ATAAC ACERT - 4 cylinder diesel engine developing 97kW (130hp)

Stage IIIA Perkins 1104 97kw Constant Speed Engine - 4 cylinder diesel engine developing 97kW (130hp) 1800 rpm - Europe Only

Tier 4F / Stage IV - Caterpillar C4.4 - 4 cylinder diesel engine developing 82kW (110hp) @ 2200 rpm

Hopper Capacity: 7m<sup>3</sup> (9.16yd<sup>3</sup>)

Feed height 3.56m (11' 8")

Drive: Twin drive motor gearbox arrangement

Belt width: 1.2m (40")

Speed Variable: 0 - 21m/min

Top & bottom deck: 3.66m x 1.53m (12' x 5')

Tensioning top deck: Rigid Top Deck std (side tensioned mats available as an option)

Tensioning bottom deck: Flip Flow Bottom Deck

Belt width: 1.2m (48") on O/S conveyor

Speed: Variable speed, 50 m/min max belt speed

Belt width: 800mm (32") chevron belt on midgrade conveyor

Speed: variable speed 120 m/min (394 ft/min) max belt speed

Belt width: 800mm (32") plain belt on fines conveyor

Speed: variable speed, 120 m/min (394 ft/min) max belt speed

Heavy duty undercarriage unit with 400mm wide pads - 2920mm sprocket centres

Control operation of tracks via hand held-set with 5m connection lead

Safety guards in compliance with machinery directive

Low level greasing

Emergency Stops (4 nr)



#### Hopper / Feeder

- ▶ Hopper Capacity: 7m<sup>3</sup> (9.16yd<sup>3</sup>)
- ▶ Feed height: 3.56m (11' 8")
- ▶ Feed in width: 2.6m (8' 6")
- ▶ Drive: Twin drive motor gearbox arrangement
- ▶ Belt width: 1.2m (40")

#### Powerunit

- ▶ Tier 3 / Stage IIIA: Caterpillar C4.4 Engine Power: 83kW (111.3hp) Engine Speed: 2200 rpm
- ▶ Tier 3 / Stage IIIA: Caterpillar C4.4 Engine Power: 97kW (130hp) Engine Speed: 2200 rpm
- ▶ Stage IIIA Constant Speed: Perkins 1104 Engine Power: 97kW (130hp) Engine Speed: 1800 rpm
- ▶ Tier 4F / Stage IV : Caterpillar C4.4 Engine Power: 82kW (110hp) Engine Speed: 2200 rpm

#### Fines conveyor

- ▶ Belt width: 800mm (32")
- ▶ Belt spec: plain belt
- ▶ Working Angle: 24° - 28°
- ▶ Rosta scraper on head drum
- ▶ Speed: variable speed, 120 m/min (394 ft/min) max belt speed
- ▶ Standard Discharge Height: 4m (13' 1") max
- ▶ Stockpile capacity: 95m<sup>3</sup> (124yd<sup>3</sup>) max
- ▶ Optional telescopic section
- ▶ Extended Discharge Height: 5.1m (16' 9") max

#### Undercarriage

- ▶ Shoe Width: 400mm (16")
- ▶ Sprocket Centres: 2.92m (9' 5")
- ▶ Speed: 0.9kph
- ▶ Gradeability: 27°

#### Transfer conveyor

- ▶ Belt width: 1.2m (48")
- ▶ Belt Speed: 83 m/min (272 ft/min)
- ▶ Conveyor fully skirted

#### Screenbox

- ▶ Top deck: 3.66m X 1.5m (12' X 5')
- ▶ Bottom deck: 3.66m X 1.5m (12' X 5')
- ▶ Tensioning top deck: Rigid Top Deck std (side tensioned mats available as an option)
- ▶ Tensioning bottom deck: Flip Flow Bottom Deck
- ▶ Drive: hydraulic with heavy duty bearing
- ▶ Catwalks: Galvanised access catwalk on both side of screen
- ▶ Screen Angle: 13° - 19°, hydraulic adjustable
- ▶ Screen Speed: 720 - 810 rpm\* \*Each tuned box has a specific speed within this range (noted on screen drive)
- ▶ Screen stroke standard: Rigid Stroke: 10mm.
- ▶ Live Deck Stroke: 22 - 26mm
- ▶ Screen box discharge end raises hydraulically 500mm to facilitate mesh changing
- ▶ Total screening area: 10.95m<sup>2</sup> (120ft<sup>2</sup>)

#### Midgrade Conveyor

- ▶ Belt width: 800mm (32")
- ▶ Belt spec: chevron belt
- ▶ Working Angle: 22° - 26°
- ▶ Speed: variable speed 120 m/min (394 ft/min) max belt speed
- ▶ Standard Discharge Height: 3.4m (11' 2") max
- ▶ Stockpile capacity: 58m<sup>3</sup> (76yd<sup>3</sup>) max
- ▶ Optional telescopic section
- ▶ Extended Discharge Height: 4.4m (14' 5") max
- ▶ Stockpile capacity: 126m<sup>3</sup> (165yd<sup>3</sup>) max

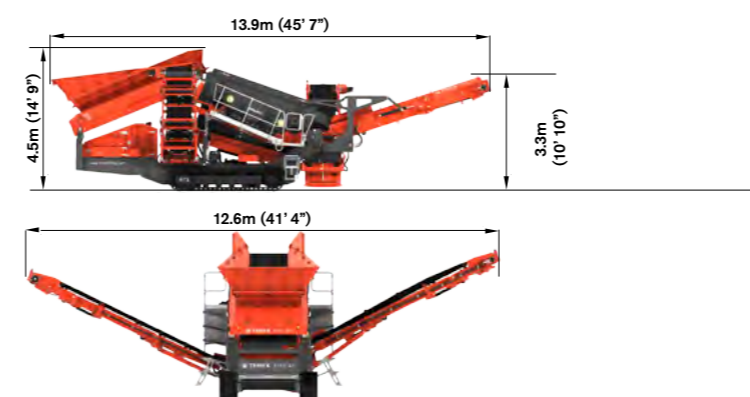
#### Oversize conveyor

- ▶ Belt width: 1.2m (48")
- ▶ Working Angle: 18° - 24°
- ▶ Speed: Variable speed, 50 m/min max belt speed
- ▶ Impact bars 2/3 Length of Conveyor
- ▶ Steel skirted full length of conveyor
- ▶ Discharge Height: 3.5m (11' 5")
- ▶ Stockpile capacity: 64m<sup>3</sup> (70yd<sup>3</sup>) max

#### Transport Dimensions

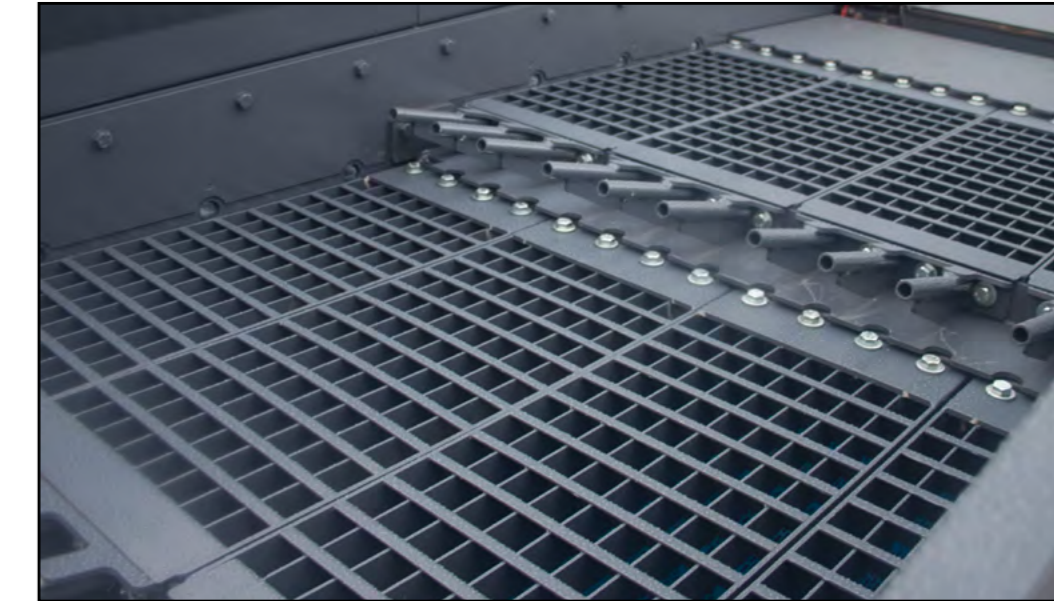


#### Working Dimensions

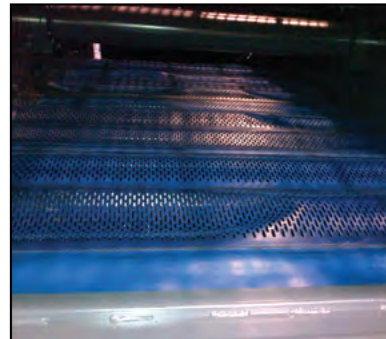


Machine Weight: \* 25,800kg (56,879lbs)\*  
Standard Machine configuration

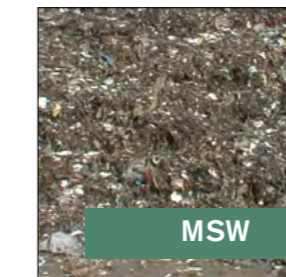
# 3D COMBI FLIP-FLOW SCREEN



▶ 3D Punch Plate Top Deck



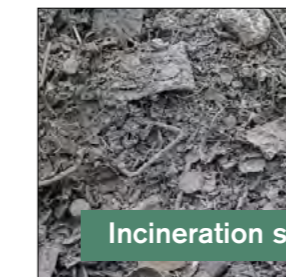
▶ Flip-Flow Mats Bottom Deck



MSW



C+D / C+I



Incineration slag

- ▶ In the centre of the mobile plant is a 3D-Combi-Flip-Flow-Screen. This combined model guarantees that the product is optimally loosened and turned over on the upper deck.

- ▶ Even large-grained material can be screened on a screening machine with a Flip-Flow screen deck.

- ▶ The screening deck with 3D screen segments, which is positioned above the Flip Flow screen deck to form a cascade, protects and reduces the stress on the Flip Flow screen mats. Their service life is increased and optimal screening results are guaranteed.

- ▶ The 3D screen segments with maximum open screen area can be changed quickly and simply thanks to the modular construction.

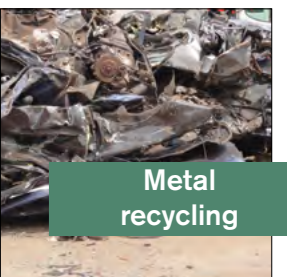
- ▶ The screen mats of the Flip-Flow screen are fastened without screws and have no edges that could cause difficulties. This means that the screen mats can be changed quickly and there is an optimal product flow on the screen mats.



Shredder light fraction



Shredder heavy fraction



Metal recycling

PROGRESS THROUGH DIVERSITY

**SPALECK**® since 1869  
conveying and separation technology

WORKS FOR YOU.™