



TEREX® | FINLAY

INCLINED SCREEN



693+

PROGRESS THROUGH DIVERSITY

SPALECK since 1869
conveying and separation technology



WORKS FOR YOU.™

693+ Spaleck

The Terex Finlay 693+ Spaleck is the ultimate in mobile fine screening and separation technology. At the heart of the plant is an innovative 2-deck German designed and constructed high performance aggressive screenbox with state of the art flip flow technology on both the top and bottom decks.

Its processing capabilities and application flexibility make the machine the ultimate tracked mobile solution for the processing and separation of recycling materials such as incineration slag, shredder light and heavy fraction, scrap metal, electronic scrap, compost, clay, quarry dust, aggregate, plastic fractions, biomass, topsoil, ore and aggregates etc.

Features:

- ▶ Unique flip-flow on top and bottom deck guarantees first-class screening, even for difficult material.
- ▶ Double deck screen box, each deck 5.9m x 1.53m (20' x 5').
- ▶ Non blinding screening mats - less contamination.
- ▶ Dynamic wear resistant screening mats allow an efficient material flow - screwless mounted and fast changeover.
- ▶ Low maintenance, since the high acceleration on the screening mats ensures a self-cleaning effect.
- ▶ Wet, moist, dry and mixed materials e.g. recycling and skip waste fines material, compost, aggregates, waste wood, timber etc.

STANDARD FEATURES

Tier 3 / Stage IIIA: Caterpillar C4.4 - 4 cylinder diesel engine developing 83kW (111.3hp) @ 2200 rpm
 Stage IIIA Constant Speed: Perkins 1104 - 4 cylinder diesel engine developing 97kW (130hp) @ 1800 rpm (EU only)
 Tier 3 / Stage IIIA: Caterpillar C4.4 - 4 cylinder diesel engine developing 97kW (130hp) @ 2200 rpm
 Tier 4F / Stage IV: Caterpillar C4.4 - 4 cylinder diesel engine developing 82kW (110hp) @ 2200 rpm

- Hopper Capacity: 8m³ (10.5yd³) - 4.25m (14') wide steel lined hopper
- Belt width: 1.2m (48") variable speed belt feeder
- Remote control hydraulic tipping reject grid c/w grouser bars
- Top deck 5.9m x 1.53m (20' x 5') Flip-Flow technology, High-resistant polyurethane mats complete (contact factory for sizes)
- Bottom deck 5.9m x 1.53m (20' x 5') Flip-Flow technology, High-resistant polyurethane mats complete (contact factory for sizes)
- Flip Flow mats fixed by rubber wedges
- Screenbox painted RAL7024 with top coat 40my
- High amplitude, single shaft drive
- Galvanised access catwalks to both sides and around top of screen
- Belt Width: 1.2m (48") plain belt on main conveyor
- Skirting on main conveyor
- Hydraulic raise and lower of main for ease of mesh changes
- Belt Width: 800mm (32") chevron belt on both side conveyors
- Belt Width: 1.2m (48") fines belt



- ### Hopper / Feeder
- ▶ Hopper Capacity: 8m³ (10.5yd³)
 - ▶ Feed height: 3.67m (12')
 - ▶ Feed in width: 4.77m (15' 8") (grid wing plates)
 - ▶ Grid aperture: 100mm (4")
 - ▶ 10mm replaceable steel hopper liners
 - ▶ Drive: Hydraulic variable speed drive via high torque gearbox
 - ▶ Beltfeeder belt width: 1.2m (48")
 - ▶ Belt Spec: Plain EP 630, 4 ply, 6 + 2mm covers.
 - ▶ Speed: variable, 0 - 16 mpm (0 - 53' per min)
 - ▶ Wide mouth opening

- ### Main conveyor
- ▶ Drive: Hydraulic variable speed drive via high torque 630cc motor
 - ▶ Belt width: 1.2m (48")
 - ▶ Belt spec: Plain 3 ply belt, EP400
 - ▶ Hydraulic adjust
 - ▶ Belt Speed: 92 mpm (302' per min)
 - ▶ Steel skirted full length of conveyor

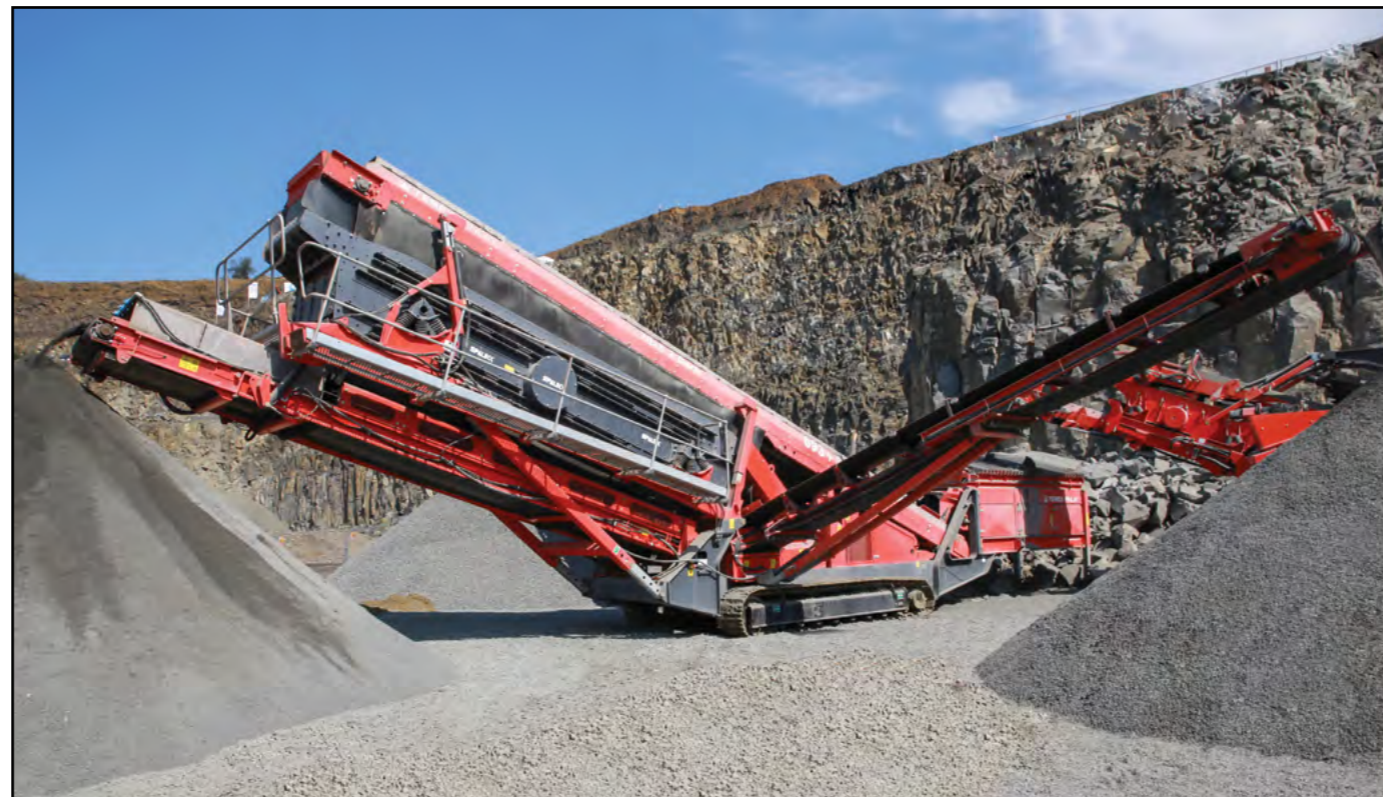
- ### Screen box
- ▶ Two flip-flow decks, each 5.9m x 1.53m (20' x 5')
 - ▶ Flip-flow generates high acceleration for first-class screening, even for difficult material
 - ▶ Drive: hydraulic heavy duty 2-bearing
 - ▶ Screen angle 18°
 - ▶ Screen cut down to 1mm
 - ▶ Screwless mounted screening mats
 - ▶ Bottom deck with sidewall sealing ensures high screening quality
 - ▶ Abrasion resistant material impact plate
 - ▶ Galvanised access catwalks on both sides and top end of screen
 - ▶ Total screening area: 18.5m² (200ft²)

- ### Fines conveyor
- ▶ Drive: Hydraulic variable speed drive via high torque 800cc motor
 - ▶ Belt width: 1.2m (48")
 - ▶ Belt spec: Plain, 3 ply, EP400
 - ▶ Working Angle: Variable 25° (Max)
 - ▶ Rosta scraper on head drum
 - ▶ Speed: variable speed 92 mpm (302' per min)
 - ▶ Standard Discharge Height: 4.86m (15' 95")
 - ▶ Stockpile capacity: 260m³ (340yd³)

- ### Power unit
- ▶ Tier 3 / Stage IIIA: Caterpillar C4.4
Engine Power: 83kW (111.3hp)
Engine Speed: 2200 rpm
 - ▶ Stage IIIA Constant Speed: Perkins 1104
Engine Power: 97kW (130hp)
Engine Speed: 1800 rpm (EU only)
 - ▶ Tier 3 / Stage IIIA: Caterpillar C4.4
Engine Power: 97kW (130hp)
Engine Speed: 2200 rpm
 - ▶ Tier 4F / Stage IV: Caterpillar C4.4
Engine Power: 82kW (110hp)
Engine Speed: 2200 rpm

- ### Undercarriage
- ▶ Shoe Width: 500mm (20")
 - ▶ Sprocket Centres: 3.8m (12' 5")
 - ▶ Speed: 0.8 km/h
 - ▶ Gradeability: 32.6°
 - ▶ Raking Angle: 9°

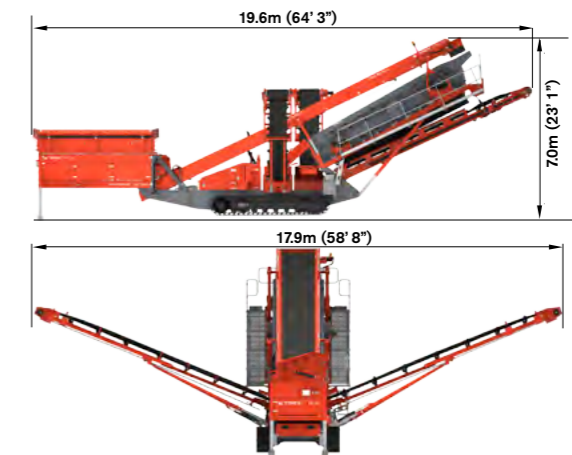
- ### Upsize / Middle Grade Conveyors
- ▶ Drive: Hydraulic variable speed drive via high torque 500cc motor
 - ▶ Belt width: 800mm (32")
 - ▶ Belt spec: Chevron EP400, 3 ply
 - ▶ Working Angle: 24°
 - ▶ Speed: Variable speed, 0 - 125 mpm (410' per min)
 - ▶ Hydraulic Folding
 - ▶ Discharge Height: 4.71m (15' 5")
 - ▶ Stockpile capacity: 193m³ (252yd³)



Transport Dimensions



Working Dimensions



Machine Weight: * 33,500kg (73,855lbs)
 * With tipping grid

WORKS FOR YOU.™

Follow us on:



www.terexfinlay.com

Effective January 2015. Product specifications and prices are subject to change without notice or obligation. The photographs and/or drawings in this document are for illustrative purposes only. Refer to the appropriate Operator's Manual for instructions on the proper use of this equipment. Failure to follow the appropriate Operator's Manual when using our equipment or to otherwise act irresponsibly may result in serious injury or death. The only warranty applicable to our equipment is the standard written warranty applicable to the particular product and sale and Terex GB Ltd. makes no other warranty, express or implied. Products and services listed may be trademarks, service marks or trade-names of Terex Corporation and/or its subsidiaries in the USA and other countries. All rights are reserved. Terex® is a registered trademark of Terex Corporation in the USA and many other countries. Copyright 2010 Terex GB Ltd.



TEREX® | FINLAY

WORKS FOR YOU.™